



DISCOVERY
WORLD EXPERIENCE

DESCRIPTION

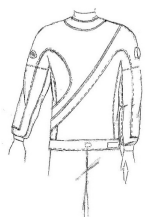
- Main features of the dry suit DISCOVERY
- Approximate weight KG 2,7
- Three-layers laminate Nylon - Butyl - Polyester
- Telescopic torso
- Wide range of sizes and colours and on size
- Inner sealing with Aquasure
- Neck and wrists Latex with the pre-cutting ring
- Neoprene neck ring protector
- Replaceable suspender
- Internal Zip-pocket
- Dry Zip Metal
- Dry zip cover made of Cordura with zip
- Internal adjustable waist
- Cordura reinforcement on knees
- Valves : SI- TECH swivel inlet with front button | Adjustable discharge
- Utility pocket on legs model REC right and left
- Boot soft sole with ankle velcro strap
- Diving bag
- Inlet hose
- Neoprene 5mm hood

The suit DISCOVERY is made of a special tri-laminate with Nylon exterior, this makes it resistant and extremely lightweight, therefore suitable for all types of diving and most of the transfers by plane, where the weight is sometimes a problem.

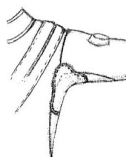


DISCOVERY
WORLD EXPERIENCE

UPGRADE A PAGAMENTO



Colored Cordura overlay



**Armpit reinforcement
Cordura o Kevlar**



**Rookboot Light
or Heavy Duty**



Long zip option



**Elbow reinforcement
Cordura o Kevlar**



**Neoprene Boot 5
mm Rigid sole**



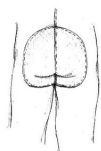
**Preformed leg
(Cave option)**



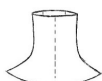
**Full arm
reinforcement in
Cordura**



**Neoprene & Latex
HD Wrist**



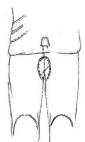
**Butt reinforcement
Cordura or Kevlar**



Neoprene neck



**Interchangeable
Wrist Set Si-Tech
(Antares, QCS,
Quick Cuff, Virgo,
Ultima)**



**Neoprene 1mm
crotch
reinforcement**



Latex neck HD



**Light Gloves or
PVC black/blu**



**Knee reinforcement
in Kevlar**



**Hood 5 mm single-
lined HD
Hood 7 mm single-
lined HD**



Pee Valve Si-Tech



**Pocket Tek
Pocket Tek Net
Pocket Side Mount**

